

GENERAL SPECIFICATIONS

HV9

Automatic Close End Baling Press

HV10

Automatic Close End Baling Press

STRUCTURAL

HEIGHT	7' (213cm)	7' (213cm)
LENGTH	21' 2" (645cm)	21' 2" (645cm)
WIDTH	7' 4" (224cm)	7' 4" (224cm)
CHAMBER	45"(114cm) L x 59" (150cm) W x 29" (74cm) H	45" (114cm) L x 59" (150cm) W x 29" (74cm) H
FEED OPENING	55" (140cm) W x 45" (114cm) L	55" (140cm) W x 45" (114cm) L
CHAMBER FLOOR	1" PLATE	1" PLATE
CHAMBER SIDEWALLS	3/4" PLATE	3/4" PLATE
SHIPPING WEIGHT	38,000 lbs. (17,236kg)	40,000 lbs. (18,143kg)

PERFORMANCE DATA

MAIN CYLINDER	9" (23cm) Bore x 100" (254cm) stroke x 6" (15cm) Chrome Rod	10" (25.4cm) Bore x 100" (254cm) stroke x 7"(18cm) Chrome Rod
OIL RESERVOIR	300 Gal. (1,136 liters)	300 Gal. (1,136 liters)
INDEPENDENT PUMPS	100 GPM (376 LPM)	100 GPM (376 LPM)
MOTORS	50 HP TEFC 460V, 3 Phase (200V Optional)	50 HP TEFC 460V, 3 Phase (200V Optional)
SYSTEM PRESSURE	3,000 PSI Automatic Mode (3,250 Maximum)	3,000 PSI Automatic Mode (3,250 Maximum)
OVERALL PLATEN FORCE	190,851 lbs. / 206,756 lbs. Maximum	235,619 lbs. / 255,254 lbs. Maximum
PLATEN FACE PSI	117 PSI / 127 PSI Maximum	145 PSI / 157 PSI Maximum
CYCLE TIME	15 Seconds - 11 Seconds Short Stroke	17 Seconds - 13 Seconds Short Stroke
ESTIMATED BALE SIZE (ADJUSTABLE)	60"L (152cm) x 45"W (114cm) x 30"H (76cm)	60" (152cm) L x 45" (114cm) W x 30" (76cm) H
ENCLOSURE	NEMA 12 Rated	NEMA 12 Rated
CONTROLS	CE/UL Approved NEMA 12 Rated	CE/UL Approved NEMA 12 Rated

BALE WEIGHTS *

OCC	1,400 lbs. (635 kg) 3.8 TPH	1,500 lbs. (680 kg) 4.1 TPH
MAGAZINES	2,300 lbs. (1,043 kg) 9.5 TPH	2,400 lbs. (1,087 kg) 10 TPH
NEWSPAPER	1,600 lbs. (726 kg) 8 TPH	1,700 lbs. (771 kg) 8.4 TPH
OFFICE PAPER	1,600 lbs. (726 kg) 8 TPH	1,700 lbs. (771 kg) 8.4 TPH
HDPE	1,250 lbs. (567 kg) 3.1 TPH	1,250 lbs. (566 kg) 3.4 TPH
PET	850 lbs. (386 kg) 2.0 TPH (May vary with percent of capped bottles)	950 lbs. (431 kg) 2.6 TPH (May vary with percent of capped bottles)
ALUMINUM CANS	750 lbs. (340 kg) 3.75 TPH	900 lbs. (408 kg) 3.95 TPH
TIN CANS	1,600 lbs. (726 kg) 4.8 TPH	1,800 lbs. (816 kg) 5.1 TPH
ALUMINUM EXTRUSIONS	1,000 lbs. (409 kg) 2.5 TPH	1,200 lbs. (554 kg) 2.7 TPH
PAINTED ALUMINUM SIDING	1,700 lbs. (771 kg) 4.25 TPH	2,000 lbs. (907 kg) 4.5 TPH
RADIATORS	1,500 lbs. (680 kg) 4.5 TPH	1,700 lbs. (771 kg) 4.7 TPH
INSULATED COPPER WIRE	3,300 lbs. (1,497 kg) 10 TPH	3,500 lbs. (1,587 kg) 10.5 TPH
MISC. NON-FERROUS SCRAP	1,300 lbs. (590 kg) 4.8 TPH	1,500 lbs. (680 kg) 5.1 TPH

* Bale Weights are based on actual customer surveys, and may differ with moisture content, material density, etc.

* Due to Equipment Upgrades, Specifications are Subject to Change

Australian Bale Press Company

4-6 Johnson Road Tuggerah NSW 2259

Phone: (02) 4353 8688 Fax: (02) 4353 6866

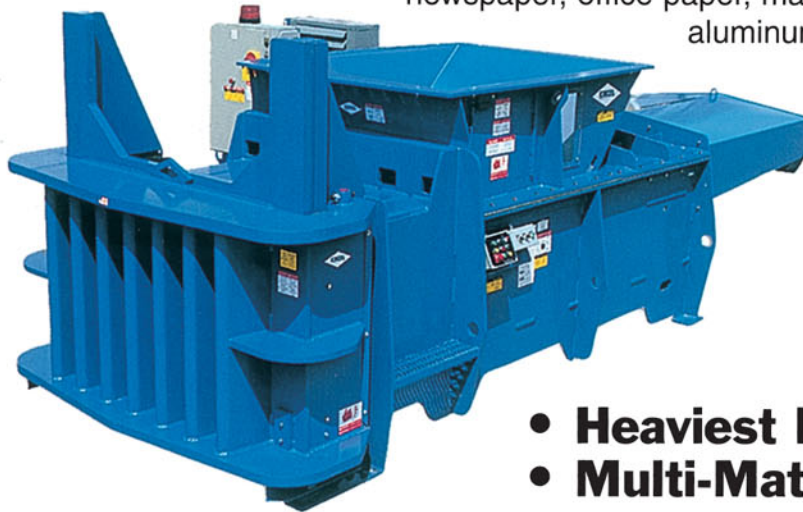


AUSTRALIAN BALE PRESS COMPANY

Models HV9 & HV10

Two ram construction in a single ram baler

The EXCEL® HV9 & HV10 have the revolutionary single sheet, interlocking construction found in our two-ram balers. The floor and side sheets are all single sheets, cut to fit together for indestructible construction. The HV9 & HV10 bale newspaper, office paper, magazines, OCC, PET, HDPE, aluminum cans and tin cans without preconditioning. Its extra heavy duty construction allows the HV's to also bale painted aluminum siding, radiators, aluminum extrusion, and insulated wires.



aluminum cans and tin cans without preconditioning. Its extra heavy duty construction allows the HV's to also bale painted aluminum siding, radiators, aluminum extrusion, and insulated wires.

- **Heaviest Baler in Its Class**
- **Multi-Material Handlers**
- **Non-Ferrous Processors**

The EXCEL® Model HV9 & HV10 bale the following materials:

Office Paper, Newspaper, OCC, Magazines, PET, HDPE, Aluminum Cans, Tin Cans, Painted Aluminum Siding, Insulated Wire, Aluminum Extrusions, Radiators, Copper and Other Materials

Standard Features Include

- Patented Hydraulic Bale Pusher Bar: (HV10 only)
- Extends to push bale beyond vertical door to allow tie off and ejection of the next bale
- The HV9 & HV10 are manufactured standard with either left-hand or right-hand hopper and controls
- 50HP TEFC Motor, Standard Voltage - 460 Volt, 60 Hertz, 3 Phase
- Industrial Hardened Logic Controller
- Hardox® 400 Replaceable Wear Liners
- 300 Gallon Hydraulic Reservoir with Regenerative Circuit
- One year EXCEL® Limited Warranty (Parts & Labor) US only
- Tongue and Groove Corrugated Floor
- Automatic Bale Sizing System
- Automatic Shear Jam Correction
- NEMA 12 rated Enclosures and Controls on Moveable Pedestal
- Castle Key Safety Interlocking System
- Full Bale Chamber Penetration
- Standard Hopper with Inspection Window
- Clean Out Tool, Grease Gun, and Extra Spray Paint
- One Bundle of 12 gauge x 13ft. Single Loop Wire Ties
- Sandblasted, Primed, and Painted Excel Blue for Long Lasting Durability
- Air to Oil Heat Exchanger
- Lower Photo Eye
- UL, CUL Approved (CE Available)
- Available with EXCEL® integrated conveyors with rubber or steel belts for a turn-key system

EXCEL HV9 & HV10

